

Worcestershire GPFV Implementation Group

Terms of Reference

Purpose

- Act as a cohesive clinically led programme group for the implementation of the Worcestershire GPFV Delivery Plan.
- Provide strong clinical leadership across the county representing General Practice.
- Determine and support priorities for implementation of the Plan from 17/18 onwards at county and CCG level against local and national funding allocations with a focus on sustainability across General Practice.
- Provide programme assurance, monitoring and risk mitigation against delivery of local and national priorities set out in the GPFV.

Membership and representation

The GPFV implementation Group shall comprise of the following members:

RCGP Regional Ambassador Herefordshire and Worcestershire – Dr Veronica Wilkie
Worcestershire Local Medical Committee – Dr Simon Parkinson / Gill Farmer
SWHC Federation Chief Operating Officer – Clare Gould
SWHC Federation Clinical Director – Dr Gemma Moore
SW Alliance Board – Dr Jonathan Thorn
SW Practice Manager – TBC
Bromsgrove Primary Care Network – Dr Ian Morrey
NW Healthcare Ltd – Dr Gio Caranci
R&B Alliance Board – Dr Jonathan Wells
R&B Practice Manager – Linda Pratt, Hillview Medical Centre
R&B Locality Operations Director – Andrea Guest
WF Alliance Board/Federation – Dr Kashaf Khan
WF Health Partnership, CEO – Clare Nock
WF Practice Manager – TBC
WF Health Partnership – Dr Roy Williams
WF Operations Director – Heather MacDonald
CCG Executive Director of Primary Care – Lynda Dando (chair)
CCG Deputy Director of Primary Care – Helen Southwell
CCG Primary Care, Business Support Officer – Sharon Kendrick
The group will co-opt other stakeholders/leads as appropriate to support programme delivery.

Quorate

Chair, Clinical (GP) representations from each CCG (Alliance and/or Federation), a Practice Manager, CCG Primary Care Member. In absence of chair nominated representative (GP or Federation representative).

Frequency: Initially 6 weekly moving to Bi- monthly meetings

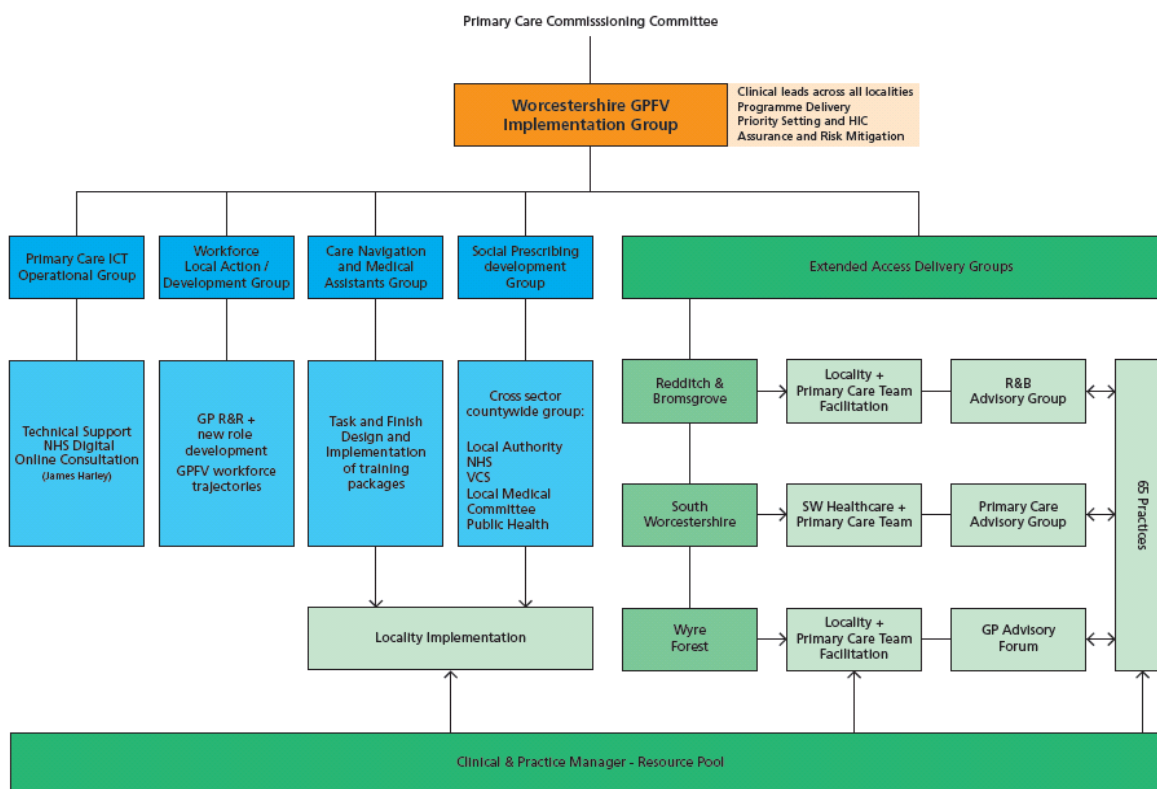
Chair: CCG Director of Primary Care

Key Responsibilities

The Group will:

- Determine priorities for use of the Worcestershire GPFV transformation funds from 17/18 and 18/19 and ensure allocation meets the requirements set out in the GPFV.
- Agree proposals for investments across CCGs providing assurance of effective use of resource.
- Undertaken a review of the Making Time Audit and other local and national intelligence to support local general practice development from 2017/18 including implementation of the 10 high Impact Actions.
- Develop and support establishment of local general practice resilience teams across the county to support sustainability in General Practice and initiate approaches to wider spread and adoption of best practice.
- Provide programme assurance and inform decisions where any corrective action is required against the work streams set out below. *
- Provide peer support, challenge and review of local work stream implementation across the county.
- Ensure that General Practice engagement is central and utilised in the design and local implementation of initiatives.
- Ensure stakeholder engagement including development of effective communications with the wider system particularly where partnership working is an enabler to delivery of the plan.
- Ensure connectivity of the GPFV Worcestershire work programme with the wider STP & national context.

* Programme Structure



Reporting arrangements

The Group will report directly to:

- Worcestershire Primary Care Commissioning Committee
- General Practice transformation Board NHSE

ToR agreed on:	15 February 2017
For review:	October 2017